

PB9 PG 13

# PLAT NO. 7 SAILFISH POINT P.U.D.

JANUARY, 1982 SHEET 2 of 2

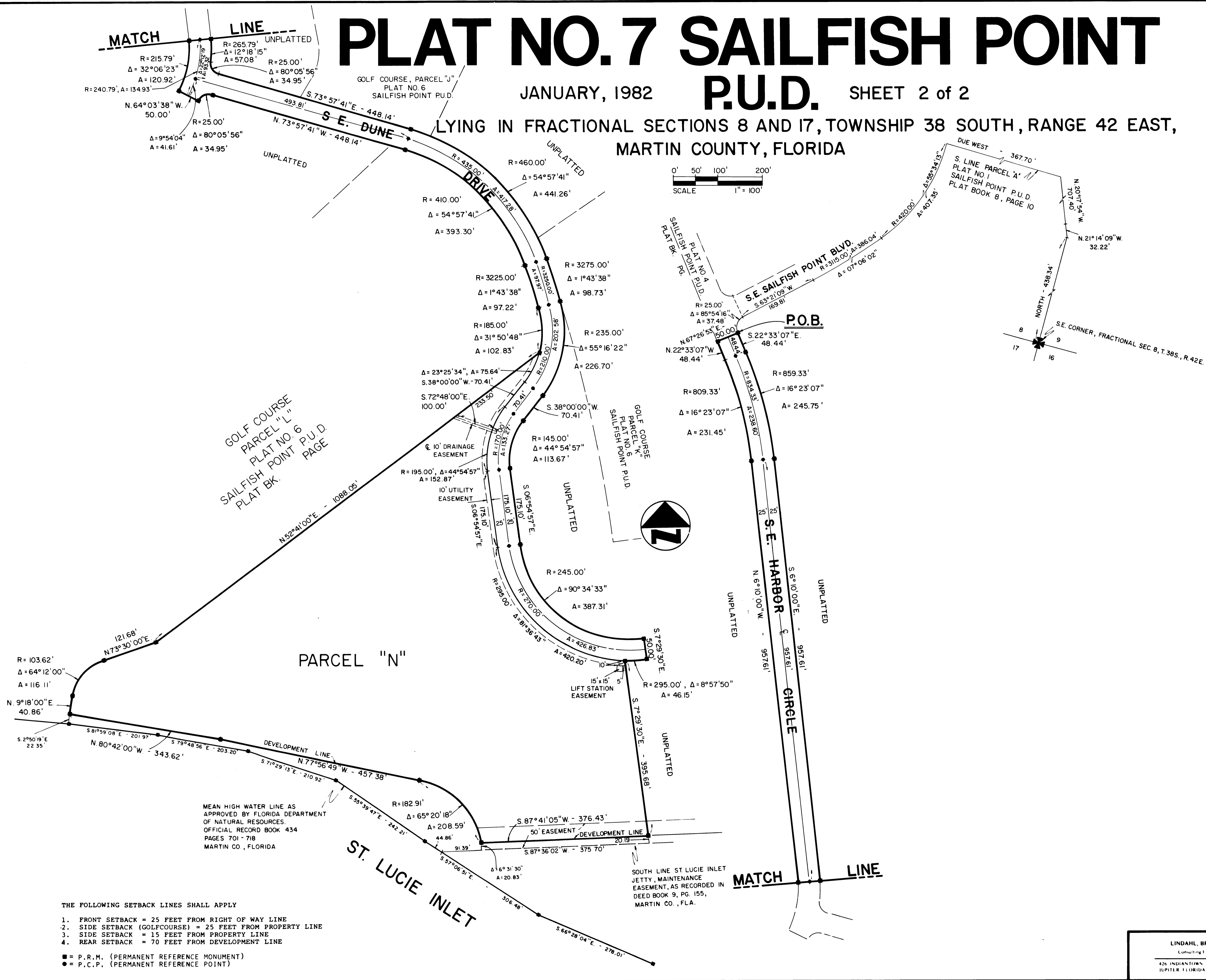
LYING IN FRACTIONAL SECTIONS 8 AND 17, TOWNSHIP 38 SOUTH, RANGE 42 EAST, MARTIN COUNTY, FLORIDA

I, LOUISE V. ISAACS, CLERK OF THE CIRCUIT COURT OF MARTIN COUNTY, FLORIDA, HEREBY CERTIFY THAT THIS PLAT WAS FILED FOR RECORD IN PLAT BOOK 9, PAGE 13, MARTIN COUNTY, FLORIDA, PUBLIC RECORDS, THIS 25th DAY OF February, A.D. 1982.

LOUISE V. ISAACS, CLERK CIRCUIT COURT MARTIN COUNTY, FLORIDA

BY DEPUTY CLERK

FILE NO.



GOLF COURSE PARCEL "L" PLAT NO. 6 SAILFISH POINT P.U.D. PLAT BK.

MEAN HIGH WATER LINE AS APPROVED BY FLORIDA DEPARTMENT OF NATURAL RESOURCES. OFFICIAL RECORD BOOK 434 PAGES 701 - 718 MARTIN CO., FLORIDA

- THE FOLLOWING SETBACK LINES SHALL APPLY
1. FRONT SETBACK = 25 FEET FROM RIGHT OF WAY LINE
  2. SIDE SETBACK (GOLFCOURSE) = 25 FEET FROM PROPERTY LINE
  3. SIDE SETBACK = 15 FEET FROM PROPERTY LINE
  4. REAR SETBACK = 70 FEET FROM DEVELOPMENT LINE
- = P.R.M. (PERMANENT REFERENCE MONUMENT)  
 ● = P.C.P. (PERMANENT REFERENCE POINT)

LINDAHL, BROWNING & FERRARI, INC. Consulting Engineers, Planners & Surveyors		2	2
426 INDIANTOWN ROAD JUPITER, FLORIDA 33458	951 COLORADO AVENUE STUART, FLORIDA 33494		